



September
2015



HOSA:

"The Key to the Future!"

~Belle Chasse HS

INSIDE THIS ISSUE:

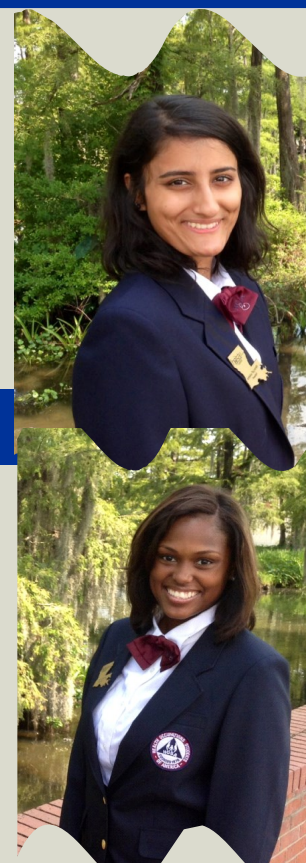
President's Pen	1
Upcoming Events	1
Healthcare Limelight	2
In the Spotlight	2
The Louisiana HOSA Cup	3
Healthcare Humor	3
NLC	3
Fall Forum	4
Informational Tidbits	4

President's Pen

Howdy folks!

I'm incredibly excited to start off this new school year with all of you lovely people. LA HOSA has so much in store for this year. We've got all sorts of fun and fabulous things planned for Fall Forum, HOSA Week, and State Leadership Conference. I'm looking forward to meeting all of you throughout the year and I hope to see you at Fall Forum coming up on October 22nd.

-Ambeka Rajvansh



President:

Ambeka Rajvanshi

President:

A'more' Prince

State Advisor:

Shirlene Bender

State Program Specialist:

Brittney Bradford

Program Assistant:

Caren Meche

Hello and welcome back to a new school year!

I want to take a moment to say how excited we are as the Fall Forum approaches! Please don't forget to turn in your forms to your Chapter Advisor by October 12th. I also want to make sure everyone is aware that September is HOSA membership month. This means you should start inviting any of your friends that are passionate about the healthcare field to join HOSA! I know this will be a fun-filled year and I cannot wait to meet everyone!

-A'more' Prince

Upcoming Events

September 2015

Membership Drive

October 22, 2015

Fall Forum

November 9-15, 2015

HOSA Week

February 27-29, 2016

State Leadership Conference

June 22-25, 2016

National Leadership Conference Nashville, TN

Stay Connected:

[LAHOSA](#)

[HOSA](#)

[Twitter](#)

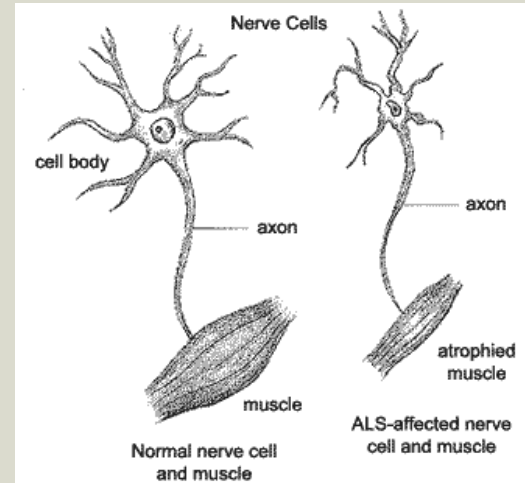
[Facebook](#)

[Instagram](#)

[Youtube](#)

Healthcare Limelight

As a result of the popular Ice Bucket Challenge held in 2013-2014 the ALS association raised over \$115,000,000! With a portion of that funding Johns Hopkins researchers believe they were able to identify the cause of amyotrophic lateral sclerosis or ALS. Fellow researcher and graduate student Jonathan Ling published the first paper explaining the crucial role of protein TDP-43 in relation to the degenerated brain or nerve cells of most ALS patients. He found that in mice cells when TDP-43 (which decodes DNA when functioning properly) becomes adhesive and clumps together it is unable to read DNA and the cell dies within a matter of days. However, when researchers inserted another protein (that was specifically designed to mimic TDP-43) into the neurons, the cells came back to life and returned to normal functioning! Although researchers cannot conclusively say a cure has been discovered, they do believe significant progress concerning treatment of the disease that affects nearly 30,000 Americans has been made. For more information please go to the [ALS Association](#)



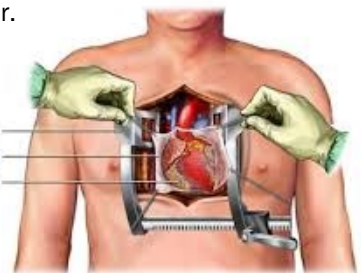
In the Spotlight

Louisiana HOŞA would like to recognize our very own advisor, Ms. Tracey Graham of Belle Chasse High School, for her appointment to the Louisiana Emergency Medical Services Task Force. The Secretary of Louisiana Dept. of Health and Hospital, Ms. Kliebert, on behalf of Louisiana Governor Bobby Jindal, appointed her for a two year term that began in January of 2015. The Task Force plays a vital role by providing the Bureau of EMS the priorities and strategic direction regarding Emergency Medical Services in Louisiana.

CONGRATULATIONS MS. GRAHAM !!

Louisiana HOŞA would also like to recognize one of our presidents, Ambeka Rajvanshi! She went to India over the summer and was given an amazing opportunity to watch live surgeries performed at the Cardiology Institute of Kanpur.

Although we cannot fit the entire passage in our newsletter here is one exciting excerpt from her story:



"They began prepping the patient by putting him on anesthesia and then injecting all of the various tubing necessary to sustain him. The doctors then started cutting open the chest after cleaning it and laying a sterile sheet around the patient. After they had cut open the sternum and the peritoneum, Dr. Verma entered the room to do the procedure. Clear and thick tubes were placed into the aorta and the pulmonary artery in order to remove all of the oxygenated blood from the body. Then spiraled tubes were placed into the inferior and superior vena cava to remove all of the deoxygenated blood. The blood was being sucked out and was going through a bypass machine. Instead of going through the heart, the blood and oxygen would be taken to all of the various organs via the machine. Once the blood was being drained, the heart was slowly stopped. After a few minutes it was at a complete stand still..."

For Ambeka's entire fascinating story please click [HERE](#)

The Louisiana HO~~S~~A Cup

The purpose of the HO~~S~~A Cup is to encourage the development of local chapter activities that benefit HO~~S~~A members, the school, and the community! The coveted trophy will be awarded at the Louisiana HO~~S~~A State Leadership Conference. To learn how your Chapter could take home the **GOLD** please go to:

<http://www.lahosa.org/#!/hosa-cup-points/c1zik>



Now I know why they call it ICU!



I FOUND THIS
HUMERUS

"A Harvard Medical School study has determined that rectal thermometers are still the best way to tell a baby's temperature. Plus, it really teaches the baby who's boss." -Tina Fey

2015 National Leadership Conference

Every year thousands of HO~~S~~A members gather for the HO~~S~~A National Leadership Conference (NLC). The NLC offers members educational symposiums, networking opportunities, and over 55 competitive events! It's a place to meet new people, learn leadership skills, and dive deep into the nation's healthcare field. This year, the NLC was held in Anaheim, California. The attendance was over 8,500 strong; our biggest yet! Louisiana HO~~S~~A was represented by 40 of our members, advisors, and family members and we hope even more join us next June in Nashville!

We would like to thank the following people for representing Louisiana HO~~S~~A in various roles:

- ♦ Tracey Graham, Belle Chasse Advisor, Quality Assurance Official for the Transcultural Healthcare Event and participation in the hypnosis show held on stage
- ♦ Carmon Simon, Lafayette High Advisor, Event Assistant for the Transcultural Healthcare event and participation in the hypnosis show held on stage
- ♦ A'more' Prince, State President, Project Display Assistant and flag-bearer
- ♦ Bethany Randell, Lafayette High, voting delegate
- ♦ Brittney Alexander, Lafayette High, flag-bearer
- ♦ Emilie Broussard, Lafayette High, Project Display Assistant
- ♦ Charlyne Peltier, Rayne High, voting delegate
- ♦ Brittney Bradford, State Program Director, NLC Staff, Project Display Coordinator, and the Event Manager for the Transcultural healthcare Event
- ♦ Shirlene Bender, State Advisor, National Competitive Events Lieutenant



If you set aside \$20 per week you would have enough money to go to both Louisiana conferences and Nashville!!!!

Fall Forum Information

- Deadline:** Registration List, Code of Conduct, Permission Form & Emergency Information must be received by the State Advisor no later than October 12
- Date:** Thursday, October 22, 2015
- Location:** UL Lafayette Student Union
620 McKinley Street
Lafayette, LA 70504
- Kickoff:** 8:00-9:00 a.m. (Sign-in)
9:00 a.m. (Program begins)
- Cessation:** 4:00 p.m. (Tentative Time)
- Cost:** \$25/per participant or advisor/chaperone
(Includes lunch) NO REFUNDS after deadline
- Attire:** Please see Fall Forum Dress Code Document [here](#)
- Chaperones:** There should be at least one chaperone for every 15 students. More chaperones may attend if desired. Additional teachers, chaperones and administrators are encouraged to attend.



**Last year's T-Shirts will be
available to purchase for \$3.00
until gone!**



September Is HOŞA Membership Month!!

There are many students in your school who want a career in healthcare... find them,
then ask them to join your HOŞA chapter!

Share your HOŞA Experience
with us
@
#LAHOSA

Want to Be Featured In Our
Next Newsletter?

Send Your Pictures and HOŞA
Stories to
students5@swlahec.com

Questions or Comments?

Please Contact:

Shirlene Bender, State Advisor
103 Independence Blvd.
Lafayette, LA 70506
Phone: 337-989-0001

students2@swlahec.com

