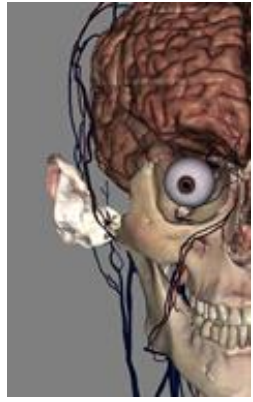


LA HOSA – ANATOMAGE SLC TOURNAMENT

IN-PERSON GUIDELINES: Secondary Level



Tournament Qualifications

- All tournaments must have a minimum of 2 schools participating.
- All tournaments must have a minimum of 12 teams competing.

Team Eligibility

- Each team must have a minimum of 3 students with an appointed team captain.
No more than 5 students per team.
- Teams must be composed of students from the same school.
- To be eligible to participate, students must be enrolled in school full-time.
- No students may compete in more than one team.
- It is encouraged that there is an educational coach, advisor, or teacher that helps prepare the teams for the tournament using resources such as anatomy and physiology books and more.

In-Person Tournament Structure

- In-person State tournaments will be played in an elimination-style for the preliminary round. Teams are competing against all of the other teams in the tournament.
- Each tournament will have at least 1 preliminary round, in which each team will be quizzed on the same set of questions during each round. Teams with the highest point totals from the preliminary rounds will advance to the semi-final rounds. The number of teams advancing to the semi-final rounds will be decided by the tournament director and/or main moderator.
 - **Preliminary Round:** all teams will answer the same set of questions
 - **Semi-Finals - Top Eight/Four:** will include the top 8 or 4 teams with the most points in the preliminary round.
 - **Finals - Final Two:** will include the top 2 teams with the most points in the semi-final round. The team with the most points will be assigned the winner of the Anatomage Tournament.
- In-person rounds will be 15-minute time slots. This will allow for teams to get acquainted with the Table software, complete practice rounds, and take the Tournament Quiz.
- Teams should show up 15 minutes early.
- Team members should not discuss the tournament questions until the tournament is complete.

Tournament Topics & References

- The questions will be developed and created by Anatomage and will test participants' knowledge on anatomical structures.
- Tournament questions are randomized and may consist of any of the following topics:
 - Bones, bony landmarks, and ligaments
 - Muscles
 - Digestive system
 - Respiratory system
 - Urinary system
 - Heart and major blood vessels
 - Brain, spinal cord, and major nerves
- Anatomage recommends using **any resources** you have available to study anatomy.

Tournament Structure & Timing

- The tournament question's structure consist of the following:
 - Preliminary: 25 questions - 4 minutes
 - Top 8: 30 questions - 5 minutes
 - Top 4: 30 questions - 5 minutes
 - Finals: 35 questions - 6 minutes
- We encourage verbal, visual, or written communication between the team members during the tournament rounds.
- Each round is played until the time expires or all the questions have been answered.

Rules for Breaking Tie

- If a tie exists at the end of the round, the team who skipped less will be deemed the winner and continue to the next round.

Scoring

- The tournament questions will be scored in the following format:
 - Correct answers, worth 10 points
 - Incorrect answers will count as -1
 - Skipped questions, worth 0 points.

Audience Rules:

- During Preliminary and semi-final rounds, there will be no audience.
- The final round will be done in a larger room where everyone will be invited to watch
- Final two teams will be shown on the large screens for all to view.
- There may be ABSOLUTELY NO NOISE or hand motions from the audience. Anyone doing so will be asked to leave.
- No one showing up late to be in the audience will be admitted once the doors are closed.



Good Luck!