



Louisiana HOSA

Chapter Success Guide

2020 - 2021

TABLE OF CONTENTS

WELCOME FROM STATE PRESIDENT	4
HOSA OVERVIEW	5
HISTORY, SIZE AND REACH OF HOSA	5
HOSA ENDORSEMENTS	5
HOSA IS CO-CURRICULAR	5
HOSA FACTS.....	6
KEY CONTACT INFORMATION.....	7
SOCIAL MEDIA AND STATE OFFICER TEAM	8
KEY EVENTS AND DATES.....	9
LOUISIANA HOSA CHAPTER ADVISOR SUMMIT	9
STATE LEADERSHIP CONFERENCE (SLC).....	9
International Leadership Conference.....	10
YEARLY CALENDAR	10
MEMBERSHIP INFORMATION	12
AFFILIATION REQUIREMENTS.....	12
INITIAL AFFILIATION APPLICATION	13
AFFILIATION FEES & PAYMENTS.....	13
Program of Work.....	14
Recognition	18
HOSA Cup	16
STARTING A CHAPTER	19
AFFILIATION PROCESS	19
HOSA'S COMPETITIVE EVENTS PROGRAM.....	20
Chart of Events for 2020-2021 - virtual.....	21
COMPETITIVE EVENT CHANGES AND UPDATES FOR 2020-2021	22
Event Topics for 2020-2021.....	22
RECOGNITION EVENTS	23
International Leadership Conference	24
LOUISIANA HOSA SOCIAL MEDIA	29
State T-shirt Contest	30
STATE PIN DESIGN CONTEST	29
NATIONAL PROGRAMS AND OPPORTUNITIES	32
PUBLIC HEALTH LEADERSHIP SCHOLARS	32
WASHINGTON LEADERSHIP ACADEMY (VIRTUAL THIS YEAR)	33
HOSA E-MAGAZINE	34
HOSA SERVICE PROJECT.....	33
RUNNING FOR OFFICE	34
SCHOLARSHIPS.....	36
LOUISIANA HOSA STATE SCHOLARSHIPS.....	37

CHAPTER SUCCESS GUIDE

2020 - 2021

ALUMNI.....	37
CONFERENCE ATTIRE	38
OFFICIAL DRESS CODE FOR ALL GENERAL SESSIONS	38
HOSA UNIFORM POLICY	38
OTHER CONFERENCE ATTIRE	38
HOSA BRAND.....	40



WELCOME FROM STATE PRESIDENT

Greetings Louisiana HOSA Members and Advisors!

Welcome to the LA HOSA on behalf of the Louisiana HOSA 2020-2021 State Officer Team! I am Macye Brown and it is a privilege to work alongside seven astonishing State Officers and Ms. Bender to ensure the success of Louisiana HOSA.

Our May/August Officer Training Retreat consisted of developing a Program of Work, ideas for involvement and expansion of the chapters, planning for the State Leadership Conference, and much more. Overall, we are dedicated to enhancing the experience of our members through various means.

Here are a couple of important notes from us to help your chapter succeed:

- Stay up-to-date on all important information by frequently checking the Louisiana HOSA website at www.lahosa.org.
- Tag along on the LAHOSA Social Media pages by sharing your activities and liking the posts.
- Make sure your chapter presidents are caught up on the Regional Google Classroom that will be coming soon.
- Look out for updates on the international level as well.

None of this would be possible without the chapter advisors. We thank you for your hard work, dedication, and guidance that you provide to all of our members. The 2020-2021 State Officer Team invites you to an exciting, productive, and impactful year. We also look forward to meeting you all at several events throughout the year. If you have any questions, please feel free to contact me at macye.lahosa@gmail.com.

I wish you all a year filled with success!

Kind Regards,

Macye Brown
State President
Louisiana HOSA



HOSA OVERVIEW

HOSA - Future Health Professionals is the premier organization for student leaders pursuing careers in the healthcare industry. HOSA's two-fold mission is to promote career opportunities in health care and to enhance the delivery of quality health care to all people.

History, Size and Reach of HOSA

Founded in 1976, formerly as Health Occupations Students of America, HOSA - Future Health Professionals has over 244,000 members each year in over 5,000 secondary, middle school, and postsecondary/collegiate chapters across the nation.

HOSA Endorsements

HOSA is endorsed by the U.S. Department of Education, Louisiana Department of Education, the Health Science Education Division of the Association for Career and Technical Education, National Health Science Consortium, and over 50 other health-related partners and industry associations.

HOSA is Co-curricular

HOSA is a national organization that operates as an integral component of the health science education curriculum. Through its network of state and local chapters, HOSA provides powerful instructional tools, recognition, leadership, networking, scholarships, and connections to the healthcare industry to thousands of members across the U.S.

Through the HOSA Competitive Events Program members compete in teams or as individuals in over 70 different events related to all aspects of health care. HOSA integrates into the Health Science Education curriculum to develop and recognize smart, dedicated, and passionate future health professionals.

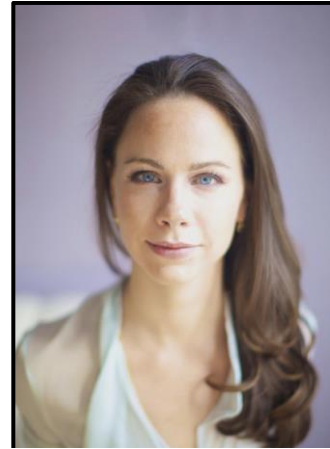
HOSA offers numerous health leadership conferences and professional development opportunities including the International Leadership Conference being held in Houston, TX next June; Washington Leadership Academy held in Washington, D.C.; Fall Forum in each Louisiana Region; and the Louisiana State Leadership Conference.

HOSA Mission Statement

The mission of HOSA is to empower HOSA-Future Health Professionals to become leaders in the global health community through education, collaboration, and experience.

HOSA Facts

-
- HOSA is one of Louisiana's six Career Technical Student Organizations (CTSOs) along with National FFA Organization, Future Business Leaders of America (FBLA), DECA, SkillsUSA, and Family, Career and Community Leaders of America (FCCLA).
- Dr. Jim Koeninger is the National HOSA Executive Director.
- HOSA is the largest student organization in America concentrating 100% of its mission and programs on developing future health professionals and leaders.
- Nationwide there are over 244,000 HOSA high school and college members. The U.S. Department of Education endorses HOSA with all state chapters endorsed by the State Department of Education.
- National HOSA conferences feature high profile speakers. Dr. Vivek Murthy, U.S. Surgeon General, was the keynote speaker at the 2016 HOSA International Leadership Conference (ILC). The 2018 International Leadership Conference featured the U.S. Surgeon General, Dr. Jerome Adams, as well as Dr. Rick Rigsby, known for empowering and motivating audiences worldwide.
- Over 10,000 attendees are present at the National conference each year.



Keynote speaker at the 2020 International Leadership Conference, Barbara Pierce Bush

- Each year HOSA awards over \$400,000 at the national and state levels to deserving members.
- National HOSA offers almost 60 healthcare industry endorsed competitive events. The competitive events program can be utilized throughout the academic year as an instructional resource.
- HOSA's Competitive Events Program includes four events specifically designed for students with disabilities.
- The U.S. Surgeon General's office hosts summer internships in Washington, D.C., for HOSA members annually.
- During the summer of 2012, National HOSA launched a new brand for HOSA to modernize the image, retain familiarity, and establish HOSA's identity worldwide.
- The 2018-2019 National Theme is "Define Your Purpose"

KEY CONTACT INFORMATION

LOUISIANA HOSA

HOSA State Charter Holder

Louisiana HOSA-Future Health Professionals
PO Box 926
Carencro, LA 70520

Louisiana HOSA Contact Information

Shirlene Bender, State Advisor
PO Box 926, Carencro, LA 70520
Phone: 337-371-5974

NATIONAL HOSA

National HOSA Headquarters

548 Silicon Drive, Suite 101, Southlake, TX 76092
Phone: (800) 321-HOSA (4672) | Fax: (972) 874-0063 | E-Mail: hosa@hosa.org
Website: www.hosa.org

National HOSA Staff

Dr. Jim Koeninger, Executive Director
Karen Koeninger, Deputy Executive Director
Laura Sheppard, Chief of Staff
Nancy Allen, Associate Director
Jeff Koeninger, Assistant Director
Tonya Loftis, Director of Finance
Bobby Crandall, Director of Technology
Bergen Morehouse, Director of Competitive Events
Jan Mould, Assistant Director of Competitive Events
Carie Staub, Assistant Director of Competitive Events
George Sifakis, Director, HOSA Washington, DC Office
Jason Koeninger, Software Architect

HOSA Supply Service – Awards Unlimited

Supplies all chapter materials, member emblematic supplies and official HOSA blazer

Phone: (800) 950-3553
Fax: (402) 474-3782 | Web:
www.awardsunlimited.com

Supplies all chapter materials, member emblematic supplies and official HOSA blazer

SOCIAL MEDIA



WEBSITES

Louisiana HOSA: www.lahosa.org

National HOSA: www.hosa.org

STATE OFFICER TEAM

State President

Macye Brown

Email: macye.lahosa@gmail.com

State President-elect

Catherine Blondiau

Email: catherine.lahosa@gmail.com

Post-Secondary/Collegiate Vice President

Jay Mosalakanti

Email: jay.lahosa@gmail.com

Region 1 Vice-President

Chase LeBlanc

Email: chase.lahosa@gmail.com

Region 2 Vice-President

AriAnna Vincent

Email: ari.lahosa@gmail.com

Region 3 Vice-President

Chez'ianne Everette

Email: cheyy.lahosa@gmail.com

Secretary/Historian

Madyson Bock

Email: mady.lahosa@gmail.com

Parliamentarian

Jody Adeyemo

Email: jody.lahosa@gmail.co

KEY EVENTS AND DATES

Louisiana HOSA Chapter Advisor Summit

To Be Determined

Fall Forum

This year Fall Forum will be virtual.

Dates: October 19, 21, 23, 2020

Fee: \$100 per chapter, no matter how many attend

Register from our state website at: www.lahosa.org > events > Fall forum

Registration Deadline: October 9, 2020

- You do not have to be registered as a member yet to register or attend (but recommended)
- You may attend any date listed
- Students may attend from home if allowed by school
- All of your students do not need to attend the same day
- Students may attend on individual computers or on one larger computer screen where all can watch at the same time
- If students are at home for Fall Forum, they will participate in activities in the separate Zoom rooms, otherwise activities in your room or wherever they are watching from.
- Be sure to have all students read the Virtual Code of Conduct form then Advisor submit the signed copy. (signed by teacher – see form)
- Chapter Advisors/teacher should submit the Virtual Code of Conduct to Shirlene Bender.
- Once you register, I will send you an invoice.
- A Zoom invitation will be sent to all teachers registered. You are asked to share this with the student
- All handouts will be emailed to you in advance to share with students.

State Leadership Conference (SLC)

This year the State Leadership Conference will be virtual

Registration Fee: TBA

Conference Registration Deadline: February 18, 2021

The pinnacle of Louisiana HOSA is the State Leadership Conference. Students from all over Louisiana come to compete for an opportunity to advance to the International Leadership Conference. Aside from competition, this conference includes many networking opportunities, leadership sessions, and a chance to create lasting friendships among chapter members. *All members must have paid their affiliation fees prior to registering for the conference.*

Virtual: March 8 – 9, 2021 via Zoom

International Leadership Conference (ILC)

Date: June 23-26, 2021 - Disney's Coronado Springs Resort, Orlando, Florida

Registration information will be available at www.hosa.org

The HOSA International Leadership Conference (ILC) is the highlight of the HOSA year. Over 12,000 high school, middle school, and postsecondary/collegiate students, advisors, industry leaders, and alumni gather for several days of HOSA excitement. Most participants at ILC compete in one of HOSA's competitive events, and the top competitors in each event are recognized for their outstanding achievements. In addition to the competitive events, many students and advisors participate in HOSA International Leadership University, the Education Symposiums, the HOSA Expo, and National Geographic Learning tests.

YEARLY CALENDAR

Date	Activity	Location/Notes
September 12. <i>Session #1</i>	Global Leadership Academy <i>Training Program for State Officers</i>	Virtual
September 23-26	State Advisor's Management Conference	Virtual
October 2	State Pin & T-shirt design deadline <i>Due to State Advisor</i>	Submission Guidelines at: www.lahosa.org
October 3 <i>Session #2</i>	Global Leadership Academy <i>Training program for State Officers</i>	Virtual
October 9	Fall Forum Registration Deadline	Registration Packet at: www.lahosa.org
October 15	Initial Affiliation Deadline for HOSA 100 Club Recognition <ul style="list-style-type: none">• <i>Initial Affiliation Application Deadline</i>• <i>Advisor Information & Chapter Information to Louisiana HOSA</i>	Mail member dues payment to: National HOSA 548 Silicon Drive Suite 101 Southlake, TX 76092
October 16 <i>(tentative)</i>	Advisor Training Summit	Virtual
October 19	Fall Forum	Virtual 9:00 a.m.
October 21	Fall Forum	Virtual 12:30 p.m.
October 23	Fall Forum	Virtual 12:30 p.m.
October 24 <i>Session #3</i>	Global Leadership Academy <i>Training program for State Officers</i>	Virtual
November 8 - 14	National HOSA Week!	Celebrated within local chapters and local communities
November 14 <i>Session #4</i>	Global Leadership Academy <i>Training program for State Officers</i>	Virtual
November 16	State Officer Applications available	Application packet available at: www.lahosa.org

November 19 <i>tentative</i>	State Leadership Conference Competitive Events committee meeting	Info will be sent
January 2, 2021	LA HOSA Scholarship application available	Tallo.org/hosa
January 23 - February 21	State Leadership Conference Registration Window	Registration Packet will be available at www.lahosa.org
February 5	State Officer Application Due	State Officer Candidate Packet and Application are available at www.lahosa.org
February 12	Notify Chapter Advisors of Officer Candidates	
February 26	Final Points deadline for HOSA Cup	Submit to State Advisor
March 1	Final Membership Affiliation Deadline	Affiliation Instructions available at www.hosa.org Mail payment to: National HOSA 548 Silicon Drive Suite 101 Southlake, TX 76092
March 3	Deadline for HOSA Cup Points	Send to State Advisor
March 8 - 9	State Leadership Conference <ul style="list-style-type: none"> • <i>HOSA's Competitive Events Program</i> • <i>State officer Nominating Committee and election process</i> <i>Health symposiums and leadership development</i> 	Virtual- more information coming
March 10	Begin accumulating HOSA Cup points for the following year	Send to State Advisor
March -TBA	Public Health Leadership Scholars Application Deadline	For more information, visit www.hosa.org
April 2	National Officer Candidate Applications due to Louisiana HOSA	National Officer Candidate Packet and Application will be available at www.hosa.org
April 2	International Leadership Conference Intent to Compete Deadline	Form will be emailed to all chapters
April 16	International Leadership Conference Competitor Notification by LA HOSA	For more information, contact shirlene.lahosa@gmail.com
April TBD	National HOSA Scholarship Deadline	For more information, visit www.hosa.org
May 12	Registration deadline for ILC	Register online at www.hosa.org
May TBD	State Officer Parent & Advisor Orientation Conference Call	Louisiana HOSA Conference Call Line or Google Hangout
May 29 – June 1 <i>Tentative</i>	State Officer Planning and Training Retreat	Lafayette, LA Holiday Inn & Suites, Lafayette North
June 24 - 27	International Leadership Conference	Orlando, FL (Disney Coronado Springs)

MEMBERSHIP INFORMATION

Since 1976 HOSA has grown to over 245,000 members. The 2019 - 2020 membership year was HOSA's 36th year of membership growth! The challenge has been set for 2020 – 2021 to continue the trend and help HOSA reach a record 37th straight year of membership growth.

Affiliate early and achieve HOSA 100 Club Recognition. Louisiana HOSA Chapters are encouraged to affiliate early in the year to achieve HOSA 100 Club recognition. To achieve HOSA 100 Club Recognition, Louisiana HOSA chapters should meet the requirements listed above by **October 15**.

All chapters achieving HOSA 100 Club affiliation status will receive a certificate and be recognized at the LA HOSA State Leadership Conference.

Affiliation Requirements

To be an officially recognized Louisiana HOSA chapter, the following requirements should be met:

Submit Initial Affiliation Application

Complete application through National HOSA Online Affiliation System

Must have 5 members and 1 advisor

Submit annual payment for National HOSA affiliation fees and Louisiana HOSA fees

Send payment to: National HOSA
548 Silicon Drive, Suite 101
Southlake, TX 76092

*Note: Chapters may add a chapter fee; **this chapter fee does not get sent to National HOSA***

Submit Chapter Profile and Advisor Information

Submit to Louisiana HOSA through link on our website.

Before You Begin Gather all information you will need to enter into the Affiliation System. This includes the following:

- ✓ Chapter Charter Number and Affiliation Password
This password remains the same each year. If you need to request your user name and password, contact your HOSA State Advisor at shirlene.lahosa@gmail.com
- ✓ Collect the Member Application Form from each student, and their dues

✓ Membership List

You will be asked to provide information about each member to include:

- *Classification (grade or class in school)*
- *Organization and title (for professional members)*
- *Complete mailing address*
- *Phone and E-mail Address*
- *Demographics*

Note: The Louisiana Membership Application is located at www.lahosa.org under Chapter Management/Affiliation

These forms will be kept by you for your information.

Initial Affiliation Application

The Affiliation Process is online and it is easy!

1. Go to the National HOSA web site: www.hosa.org
2. Click **Login** in the upper right corner. You will then be asked for your national charter number and password. Enter the information and begin the online affiliation process.
3. After successfully logging in, proceed to **Chapter Membership and Conference Registration**.
4. You will reach the main menu – Then select **Complete the Affiliation Application**.

TIP: REVIEW THE ONLINE AFFILIATION INSTRUCTIONS

To access instructions for online affiliation, please click on the first link in the main menu. It is recommended that you review the instructions if you are unfamiliar with the online affiliation system.

Affiliation Fees & Payments

Once local members are entered into the affiliation system, the chapter is ready to submit payment. Once entered, NO NAMES MAY BE REMOVED for any reason.

Fees The National HOSA affiliation fee is \$10.00 per member. The Louisiana HOSA affiliation fee is \$15.00 per member. **Fees total \$25.00 per member.** This is the amount that must be submitted for each member. You may add a chapter fee, but that fee will not go to HOSA.

Submit payment To make payment, follow these steps:

1. Print Invoice. To access the invoice, go to the Main Menu of the National HOSA Affiliation System. Select **View and Print an Affiliation Account Statement (PDF)** in the main menu.
2. Make check payable to National HOSA. Both national affiliation fees and state fees are submitted and paid to National HOSA.
3. Mail payment and copy of invoice to:

National HOSA
548 Silicon Drive, Suite 101
Southlake, TX 76092

Note: this is the only payment that will go to National HOSA each year.

Chapter Profile & Advisor Information

The final step for Initial Affiliation is to submit a Chapter Profile and Advisor Information to Louisiana HOSA. These requirements help ensure chapters start their year strong with a leadership team in place and a plan of action for the year. Both the Chapter Profile and Advisor Profile should be submitted to the Louisiana HOSA State Advisor by submitting through our state website, www.lahosa.org under the Chapter Management/Affiliation tab.

Chapter Officers Officers serve as the student leaders for the local chapter. These individuals may be elected and/or appointed to serve in a variety of positions (for example: President, Vice President, Secretary, Treasurer, etc.). Additional information about the responsibilities and duties of HOSA chapter officers is available in the National HOSA Handbook: Section C.

To meet this requirement, chapters will submit a contact list (part of the Chapter Profile) for their local officers to the Louisiana HOSA State Advisor Shirlene Bender at shirlene.lahosa@gmail.com. This list will be utilized by the State Officer Team to facilitate communication between the state and local levels.

Voting Delegates

The responsibility of being a voting delegate requires the student to be able to listen to the other members of the chapter when deciding how to vote. Voting delegates will be asked to vote for state officers, and other events that may arise during the year.

Student Helpers

HOSA is a student-led organization. Students must step up and take responsibility for the activities. We request that you choose one or two trustworthy and helpful students to take the paperwork load off of you, and help the chapter remember deadlines, upcoming events, etc. The state advisor will be in contact with them as well as with the Chapter Advisor.

Student Career Interest Form

The Louisiana Membership Application asks members to list their career interest at this time. Please have your student helper fill out this list and email to the State Advisor Shirlene Bender at shirlene.lahosa@gmail.com. This information is vital when seeking funding for Louisiana HOSA.

Program of Work (POW) A Program of Work (POW) is a summary of all activities and projects a chapter plans to carry out throughout the year. It is recommended that every chapter send their Program of Work to the Louisiana HOSA State Advisor by emailing shirlene.lahosa@gmail.org. This lets us know that your chapter has a plan for the year, and is seriously involved in sound HOSA activities in your school and community.

See Sample below.

PROGRAM OF WORK [SAMPLE] FOR: CHAPTER NAME

Description of Activities/Projects	Time Frame											
	SEP	OCT	NOV	DEC	JAN	FEB	MAR	APR	MAY	JUN	JUL	AUG
Chapter Unity												
1. i.e. Member Pizza Social	X				X				X			
2. i.e. Purchase Chapter Scrubs											X	
3.												
College/Career												
1. i.e. Tour of local hospital			X									
2.												
3.												
Community Service												
1. i.e. Fundraising event for Ped. Cancer Foundation				X								
2.												
3.												
School Service												
1. i.e. Campus clean up						X						X
2. Teach Handwash @ elem School												
3.												
Public Relations / Marketing												
1. i.e. Create HOSA Brochure	X											
2.												
3.												
Partnerships												
1. i.e. Letters to businesses for support		X										
2.												
3.												
Leadership Development												
1. i.e. Fall Forum		X										
2.												
3.												
State Leadership Conference												
1. i.e. Order chapter t-shirts					X							
2. i.e. Chapter Night							X					
3. i.e. Outstanding HOSA Chapter Scrapbook	X	X	X	X	X	X	X	X	X	X	X	X
4.												
Other												
1.												
2.												

National HOSA Chapter Membership Recognition

HOSA 100 Club: Chapters that submit their paid affiliation fees by **October 15** will be recognized as members of the HOSA 100 Club at the State Leadership Conference and will be listed in the LA HOSA newsletter and on our state website.

HOSA 100% Affiliation Club: Chapters that affiliate 100% of their Health Science students with HOSA will be recognized as a member of the HOSA 100% Affiliation Club and will be listed on the LA HOSA web site and newsletter.

Louisiana HOSA New Chapter Recognition

Each new chapter will be presented with a framed copy of their charter at the first conference they attend.

Louisiana HOSA Membership Recognition

Deadline: Recognition will be based on paid membership as of February 8

Louisiana HOSA will celebrate the recruitment efforts of chapters during the State Leadership Conference.

- All chapters increasing their membership over the last year will be recognized.
- The chapters with the most significant achievements in membership growth will receive special recognition on stage at the State Leadership Conference.

Louisiana HOSA Advisor Mentorship Program

Louisiana HOSA continues to achieve growth through the commitment and support of local chapter advisors. Louisiana HOSA will provide additional support to new advisors through a mentorship program. In addition, experienced advisors will receive special recognition for participating in this program as a mentor.

To sign up for the Advisor Mentorship Program, either as needing a mentor, or as being a mentor, please email the state advisor at shirlene.lahosa@gmail.com.

Louisiana HOSA CUP Chapter of the Year Winner

Deadline: March 5, 2021

The HOSA CUP Chapter of the Year program recognizes the top achieving chapters in the state. Chapters earn points for participating in the many activities offered by Louisiana HOSA in the areas of chapter management, conference attendance and recognition, recruitment, public relations, and participation in state and national projects. Activities will be based on participation and involvement, not size of the chapter. Points will be awarded based on the criteria below. The top three chapters will be recognized at the State Leadership Conference. The top winner will take the Traveling Trophy back to their school for the year!

HOSA Cup Points –Short list

Read attached explanation of each item on this list (subject to change) located on our state website.

Deadline: March 5, 2021

Points will begin to accumulate for the following year the day after the SLC.

Membership

Online Affiliation

New Chapter

Professional Members

Chapter Advisor Information Sheet Submitted

Chapter Profile Submitted

Program of Work Submitted

Chapter Activities

HOSA Promotion

Career Awareness

Community Service

Networking events

Healthcare Partnerships Formed

Leadership Development

Health Presentations

Healthy Lifestyle Activities

Social Events by Chapter Members



Louisiana HOSA Publication

Chapter Stories Submitted

Article for National E-News Submitted

HOSA Week

HOSA Week Proclamation Submitted

School/Community Service Project

Opportunity in Health Care

Appreciation Project to the Health Care Community

Fall Forum

Early Fall Forum registration (two weeks or more early)

On-Time Fall Forum Registration

Late Fall Forum Registration

Submitting a Chapter Picture

Pin Design Entry

T-Shirt Design Entry

Winning Pin Design

Winning T-Shirt Design
Applying to sing the National Anthem

State Leadership Conference (SLC)- General

Early SLC Registration
On-time SLC Registration
Late SLC Registration
Chapter Banner/Flag to SLC (not this year)
Applying to sing the National Anthem
Applying for a State Officer Position

State Leadership Conference – Competitive Events

Participates in any Health Science Events
Participates in any Health Professions Events
Participates in any Emergency Preparedness Events
Participates in any Leadership Events
Participates in any Teamwork Events
Earn and apply for the Barbara James Service Award
Enters the Outstanding HOSA Chapter Event (state only event)
Enters & competes in the Healthcare Issues Exam Event
Participates in the National Service Project
1st place winner
2nd place winner
3rd place winner

International Leadership Conference

Submits any Recognition Event
Competes in any event other than Recognition Events
Attends ILC but does not compete
Attends ILC as a Voting Delegate
Is on the nominating committee

Miscellaneous

Apply for the Public Health Leadership Seminar
Apply for a HOSA scholarship
Apply for LA HOSA Scholarship
Apply to become a National Officer
Apply to be a Public Health Leadership Scholar

One-time Add-Ons

Any additions or changes to this list will be emailed to all chapters and posted on the LA HOSA website

STARTING A CHAPTER

Over 1,050 members in 37 chapters across Louisiana have made the decision to join HOSA and become Future Health Professionals! How can you start a HOSA chapter at your school?

Requirements To start a HOSA chapter, identify a faculty member to serve as the chapter advisor and recruit at least **five** members interested in pursuing careers in health care.

Affiliation Process

Get started today! Just follow these steps:

1. Contact Louisiana HOSA State Advisor at 337-371-5974 or email shirlene.lahosa@gmail.com and indicate your interest in starting a HOSA chapter!
2. Decide which method your program will use to organize one or more HOSA chapters. The options are:
 - a. **Classroom-based chapter.** A HOSA chapter is formed for each health science class of five (5) or more students.
 - b. **Instructor-based chapter.** A chapter is formed by one health science instructor for all students enrolled in his/her classes.
 - c. **School-based chapter.** A single chapter is formed for all students in all classes regardless of the number of teachers.
3. Contact local school/college officials (e.g., activity directors, Dean of Student Activities) and inform them about starting a HOSA chapter. There may be additional rules, regulations, or approval processes to fulfill in order to start a HOSA Chapter. This is also a great opportunity to educate school officials about the benefits of HOSA.
4. Set up an interest meeting with students. Tell them about the purpose of HOSA and refer them to the websites for more information. Give them an assignment to surf the HOSA website and then suggest ideas.
5. At interest meeting, give them the member application including amount of dues (be sure to add chapter dues).
6. Complete the Online Chapter Affiliation Application.
7. Elect chapter officers and develop a Program of Work.
8. Have each students join a committee.
9. Set up a school visit by the state advisor or state officers to help guide your chapter into the world of HOSA!

COMPETITIVE EVENTS PROGRAM

HOSA's Competitive Events Program provides members the opportunity to showcase their skills, knowledge, and leadership abilities in 70 different healthcare-related events and recognition events. The Competitive Events Program recognizes members for their excellence in

competition on the state and national level. The top state performers are invited to compete at HOSA's annual International Leadership Conference.

Louisiana has determined approximately 30 of the events that will be offered at the state level.

HOSA's Competitive Events Program

HOSA's competitive events are divided into six categories:

- Emergency Preparedness Events
- Health Professions Events
- Health Science Events
- Leadership Events
- Teamwork Events
- Recognition Events

Please Note:

1. *There are additional National HOSA competitive events not offered in Louisiana.*
2. *Competitive event rules are in the HOSA Handbook, Section B.*
3. *The Guidelines are at: <http://www.hosa.org/guidelines>.*

How to Prepare for a Competitive Event

1. Connect with HOSA Chapter Advisor and let him/her know about their interest in entering a competitive event at the State Leadership Conference.
2. Review the State Competitive Events List found on the state website and select the event that is consistent with your career objective or interest.
3. Review the current edition of event guidelines, and specifically concentrate on the "General Rules and Regulations" in preparing for the event.
4. Study the detailed guidelines and the judge rating sheet(s) to know the criteria by which competitors are evaluated.
5. Practice, practice, practice, and practice the event at the local chapter level before competing at the state conference.
6. Talk with other members who participated in this competition previously and gain as much as possible from their experiences.
7. Ask the chapter advisor to conduct event simulations in the classroom to allow all members to have an event experience.
8. Know all rules and procedures for the event in which they are entering to avoid disqualification or point deductions.
9. Enter state competition and carefully review all instructions to event participants.
10. Enjoy the competition -- the real benefit was realized in the preparation.

The following is a chart of all the events that will be offered virtually this year at our Virtual State Leadership Conference (VSLC). More information will be found on our state website soon.

This year only: You may compete in two events, plus HOSA Bowl. Only ONE of the two events may be an event with a live presentation (Medical Spelling or Job Seeking Skills).

Competitive Event	# in Team	Online Test	Additional Component	Live Event
Health Sciences				
Behavioral Health	1	Yes		No
Cultural Diversity	1	Yes		No
Health Informatics <i>New!</i>	1	Yes		No
Human Growth & Development	1	Yes		No
Medical Math	1	Yes		No
Medical Terminology	1	Yes		No
Medical Spelling	1	Yes		Round 2
Nutrition	1	Yes		No
	1			
Emergency Preparedness				
CPR/First Aid	2	Yes	Essay	No
EMT	2	Yes	Essay	No
Leadership				
Research Poster <i>New!</i> (Replaced the Extemporaneous Health Poster)	1	No	Upload 1 Photo Tallo Standard size Poster board provided by competitor.	No
Extemporaneous Writing	1	No	1 hour to write and submit to Tallo. Start/Stop times are to be stamped when submitted to Tallo	No
Health Career Photography	1	No	Upload to Tallo by February 19	No
Job Seeking Skills	1	No	Application removed (Round 1-Judges will judge CL and resume prior to SLC). Cover Letter and resume upload to Tallo by February 19	Round 2

Teamwork				
Forensic Science	2	Yes	Essay	No
Health Career Display	2	No	Upload video link, 1-3 photos of display, and reference page to Tallo by February 19.	No
HOSA Bowl <i>New Rules!</i>	4	No		Undecided
Health Professions				
Home Health Aide	1	Yes	Essay	No
Nursing Assisting	1	Yes	Essay	No
Physical Therapy	1	Yes	Essay	No
Sports Medicine	1	Yes	Essay	No
Vet. Science	1	Yes	Essay	No
Middle School				
Medical Reading	1			No
Life Threatening Situations	1			No
Prepared Speaking	1			No
Health Career Display	2			No
Recognition Events - MS				
Barbara James Service Award	Chapter			
HOSA Happenings	Chapter			

Competitive Event Changes and Updates for 2020-2021

All changes will be listed at the top of the new **Event Guidelines**. New Event Guidelines will be rolled out on September 1.

It is important that you read the changes carefully. Many things change from year to year.

Event Topics for 2020-2021

Public Service Announcement:

The Future of Healthcare – How HOSA Is Making A Difference!

Prepared Speaking

Unlock Your Potential!

RECOGNITION EVENTS

HOSA's Recognition Events are designed to recognize members and chapters for outstanding work in HOSA and HOSA-related projects. There are six Recognition Events that students are able to choose from, with recognition on both the state and national level.

Although students can only compete in one competitive event at the state and national conference, they can participate in as many recognition events as they wish.

The Recognition Events are:

- Outstanding HOSA Chapter
- Health Care Issues Exam
- National Service Project (HOSA Service Project)
- Barbara James Service Award
- Outstanding HOSA Achievement – This project will be introduced at the start of the year.

A brief overview of each recognition event is below. Complete rules and guidelines, criteria, applications, and verification forms are available on our website at <http://Louisianahosa.org/recognition>.

Healthcare Issues Exam

Purpose: To encourage Health Science and Public Safety students to investigate, analyze and apply their knowledge of current healthcare-related issues.

Description: This event shall be in the form of a 50-item multiple-choice test and one essay question that will be graded only to break a tie. All questions will be written at a level to measure thinking skills. Competitors will have 1 hour to complete the test. Dates for state testing will be from July 1 – November 1. Dates for ILC will be from January 1 – May 15.

HOSA Service Project

Purpose: To encourage Health Science and Public Safety students to provide community service through the adoption of goals and implementation of strategies related to the support of a national health care organization.

Description: The HOSA Service Project involves the sponsorship of a national healthcare organization by local HOSA chapters. Local chapters plan service projects to support the selected organization. Chapters document their involvement and submit documentation to their state advisor by the state deadline to be eligible for national recognition.

2020- 2022 Service Organization: Be The Match BeTheMatch.org/HOSA

Barbara James Service Award

Purpose: To encourage Health Science and Public Safety students to become contributing members of their communities by performing community service.

Description: The Barbara James Service Award is in memory of Barbara James, 1982-83 HOSA Inc. Board Chairman. Her leadership skills and contributions to HOSA exemplify the caring and compassion of HOSA members. This award seeks to recognize individual HOSA members whose commitment to community service is worthy of recognition.

Outstanding HOSA Achievement (submitted by state; all chapters may participate)

Purpose: This event is designed to recognize chartered associations for their special achievements, projects, events, and activities that are completed by and unique to individual chartered associations.

Description: Each chartered association is eligible to submit information about one achievement per membership year. Chartered associations will submit a list of all members and chapters who participate in the special achievement. Entries submitted will be reviewed by a panel of judges and those meeting the minimum standards will be recognized at the HOSA International Leadership Conference.

INTERNATIONAL LEADERSHIP CONFERENCE (ILC)

The Annual International Leadership Conference (ILC) brings together thousands of future health professionals from across the country and other territories and countries. This conference features:

- Exciting general sessions
- Educational and social learning activities
- Leadership academies
- Tours to healthcare facilities
- Exhibits presented by professional healthcare associations
- National Competitive Events
- Annual business of the national student organization of HOSA, including the election of national leaders
- Educational symposiums
- Opportunities to meet people from across the United States and other countries & territories
- Fun, excitement, recognition, and opportunities for HOSA members!

Eligibility

All members registered by the Louisiana HOSA ILC deadline are eligible to attend ILC.

For competitive events, Louisiana HOSA sends the top three competitors/teams in each event to compete at ILC. If the top three are unable to attend, the State Advisor may ask others to compete. To be eligible to compete, chapters must complete every step in the Registration Process including the Intent to Compete Form and Online Conference Registration. **Each state may only register three people for each event to compete.** Anyone may attend ILC even if not competing.

ILC Registration Process

Each year, Louisiana HOSA will publish an ILC Registration Guide, which serves as your guide in preparation for ILC. *Although National HOSA provides registration information and deadlines, it is important to adhere to Louisiana HOSA's process in order to be eligible to attend.*

State Winners List: Following the State Leadership Conference, Louisiana HOSA publishes the list of winners on the state website. The top three individuals or teams in each event are automatically invited to compete at Internationals. However, if a top 3 competitor decides not to attend ILC, Louisiana HOSA will move up the next competitor. This means that members placing 4th or 5th etc. may still have the opportunity to compete at nationals.



Intent to Compete: All top five winners in all competitive events must submit an Intent to Compete form. This form serves as official notification to Louisiana HOSA regarding a competitor's intent to compete. This important form assists Louisiana HOSA in establishing the final list of competitors and ensures that Louisiana HOSA will be fully represented in all competitive events. Every competitor who received 1st, 2nd, 3rd, 4th, or 5th place should have an Intent to Compete form completed, even if the competitor(s) will not attend ILC. Any forms not received by the Intent to Compete deadline will be assumed as "No, will not attend" response. ***Intent to Compete Deadline: April 2, 2021*** *This form will be on our state website and may be submitted online.*

ILC Competitor Notification: All Intent to Compete Forms will be processed and chapters notified with a final ILC Competitor List. This list will be published on the Louisiana HOSA website at www.lahosa.org and/or emailed to all chapters.

ILC Competitor Notification Release Date: April 16, 2019

ILC Online Registration: The Louisiana HOSA ILC Registration Guide will provide the steps to register for conference. Although National HOSA provides registration information and deadlines, it is important to adhere to Louisiana HOSA's process. Chapters are responsible for registering students for events and confirming chapter details. Registration must be completed by the Louisiana HOSA deadline as a validation process takes place immediately after the deadline.

ILC Registration Payment: Registration payments should be directed to Louisiana HOSA. Please make checks payable to Louisiana HOSA and mail check to:

Louisiana HOSA
PO Box 926
Carencro, LA 70520

TIP: IT'S NEVER TOO EARLY!

It's never too early to start planning for the International Leadership Conference! Start planning ahead by saving the dates in the calendar, studying competitive event guidelines, and fundraising.

STATE OFFICER GOALS AND INITIATIVES

The State Officer Team has developed an ambitious Program of Work to help take Louisiana HOSA to the next frontier. The officers hope all chapters will support them in their efforts.

Communication

- Increase communication between Northern and Southern chapters through Northern chapter visit.
- Network with other State and National officers, communicating with National Officers throughout the year, and participating in activities encouraged by the National Officers and National HOSA.
- Increase communication between State Officers and Chapter Officers through chapter visits, newsletters, and one-on-one interactions, and social media.
- Use social media to share videos about competitive events and state officers, and encourage members to utilize social media to connect with Louisiana HOSA.

Membership

- Middle School: Reach out to potential advisors, visit middle schools, and support new middle school chapters. Encourage the development of having secondary chapters help their local middle school chapters.
- Secondary: Identify potential new chapters, support established chapters, and encourage membership growth in all chapters.
- Post-Secondary: Reach out to potential post-secondary chapters, explore fundraising opportunities, and support established chapters.
- Alumni: Encourage high school seniors to sign up for alumni membership, and promote alumni membership at the State Leadership Conference.

Advocacy

- Seek out partnerships in the community and promote HOSA to industry partners.
- Connect with Elected Officials throughout the year at Washington Leadership Academy and the February Meeting to advocate for HOSA and CTE.
- Market the successes and activities of local chapters to promote how HOSA helps members grow.
- Attend Capitol Day

Participation

- Increase participation at conferences through encouraging members to run for State Office, and encouraging members to compete in events that have fewer members participating in them.
- Promote community service through explaining the hour tracking program, exchanging community service ideas by promoting the Barbara James Service Award.

Conferences

- Plan and host the State Leadership Conference.
- Encourage attendance at conferences through blog articles and promotion on social media.
- Host fundraisers for the Be The Match HOSA service project.
- Present fun and informative workshops at the State Leadership Conference.

The state officers would love to discuss their goals and initiatives further and share how they plan to accomplish each of these.

STATE PROGRAMS AND OPPORTUNITIES

Chapter Visits

Having a state officer visit a local chapter connects state officers with local members while giving the state officers an opportunity to promote state and national conferences, programs, and initiatives. State officers can discuss a particular event, explain HOSA to a new chapter, and encourage students to get involved. Oftentimes chapters can connect with a state officer's passion, excitement, and commitment to HOSA and use it to foster those same feelings in their chapter. To schedule a visit, email shirlene.lahosa@gmail.com,

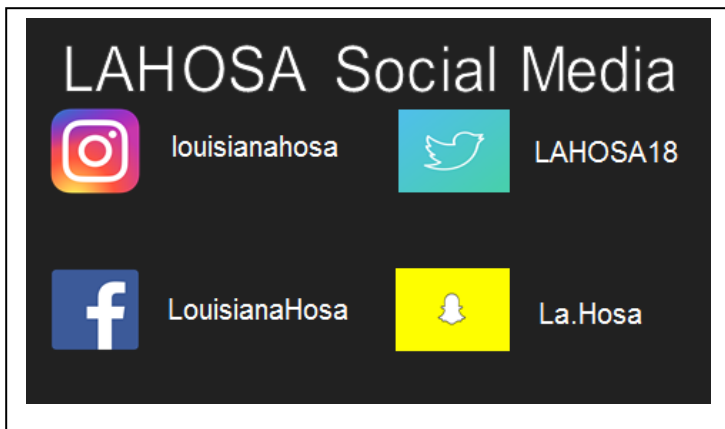
Louisiana HOSA Newsletter

What exciting things are happening in your chapter? Send a message to the state secretary to have your chapter featured! This newsletter reaches all chapters, some potential chapters, the Board of Directors, and funders & partners.

Louisiana HOSA Website

Get your voice heard! Receive publicity for your chapter's successes! Highlight a member's achievements! The Louisiana HOSA Online website is always looking to promote the outstanding work of the local members, officers, advisors, and chapters. Have an officer or member write an article about a recent chapter activity or member success and email shirlene.lahosa@gmail.com or email the state officers with a story idea and they will follow up and develop a story!

Louisiana HOSA Social Media



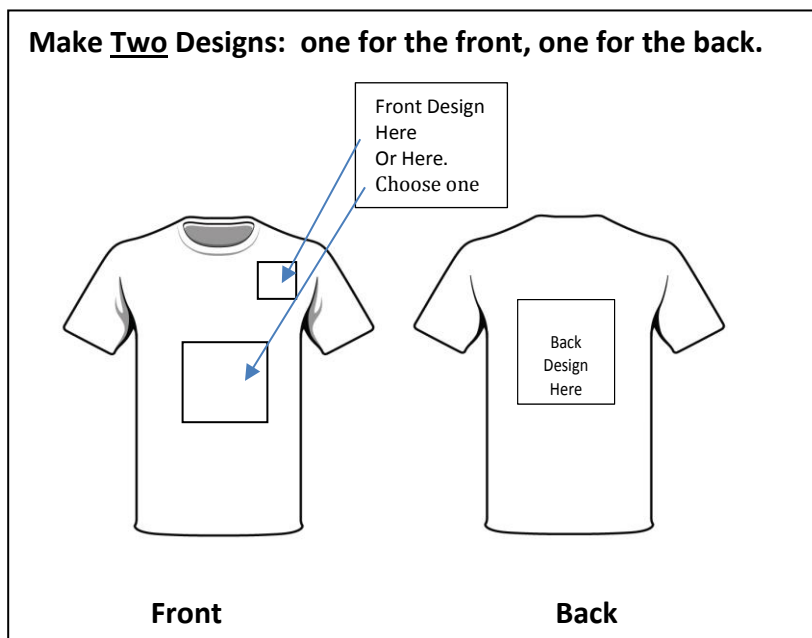
Louisiana HOSA is on Twitter, Facebook, Snapchat, and Instagram where we consistently post quick updates and announcements about events, activities, programs, health related news and announcements, pictures, and key accomplishments. Visit us on these sites to follow Louisiana HOSA and stay up to date on what's new and happening with Louisiana's Future Health Professionals!

State Pin Design Contest

Every year Louisiana HOSA creates a state pin used as the State Leadership Conference pin and as the official trading pin for the state during the International Leadership Conference. Members are encouraged to create a pin design that captures Louisiana. Voting will take place at the Fall Forums and the winning pin design will be used as the inspiration for the official trading pin of Louisiana.

The winning design for Louisiana HOSA will be selected by the student participants at the Fall Forums. The criterion for the pin design is listed below:

State T-shirt Design Contest



All entries to this contest must comply with the following materials and specifications:

- All entries must be in color. The design must use no more than three colors.
- **You must specify the t-shirt color** (solid color, NO WHITE shirt) Write shirt color on bottom of design page.
- Shirts will be short sleeve.
- Entries may be hand-drawn, painted, colored with markers, crayons, or colored pencils and should be on 8 ½" x 11" white unlined paper. Computer generated or hand-drawn entries are allowed but must follow the size requirements.

Eligibility

This competition is open to all active Louisiana HOSA members in good standing.

Judging

Preliminary round judges will be individuals from the health care industry or non-HOSA members.

Voting

The top 5 scoring designs will be presented at the Fall Forum. Voting delegates will vote on the design during the Fall Forum

Deadline

Members will submit shirt designs to their State Advisor by deadline of **October 2, 2020** .

State Advisor email:

shirlene.lahosa@gmail.com. **No entries via Text or Fax.**

- All entry drawings should be at least 5" wide x 5" tall.
- Must submit front and back of shirt designs. On the bottom of each sheet, specify "front" or "back."
- **Use two separate sheets for design: one for front, one for back.**
- The design should depict an aspect of Louisiana. **Please don't put a date on shirt design.**
- This is NOT a team event. One entry per member. **There is a limit of 5 entries per chapter.** If more chapter members turn in a design, your chapter should vote on the top 5 and submit those.
- All copyright laws must be followed in the creation of the design.
- All designs submitted become the property of Louisiana HOSA. Submitting a design for the state t-shirt releases all rights for the winning design to Louisiana HOSA for marketing purposes.
- The words "Louisiana" & "HOSA" should appear on the t-shirt. The words do not need to be next to each other.
- The National HOSA emblem or logo or Louisiana HOSA emblem **should not** be used on the t-shirt.
- All designs submitted become the property of Louisiana HOSA.
- The designer's name, school, and advisor's name must be lightly written in pencil on the **back** of the design in the bottom left corner.
- Students who are unable to attend the Fall Forum may still submit a design for consideration.
- The Winning Design will be announced on the LA HOSA Website the week following Fall Forums (late October).
- The winning school will receive a trophy.
- The name and school of winning designer will be shown on back of shirt; winner will also receive three additional shirts.
- Designs must be submitted in a PDF format and be less than 10 MB in size. They must be submitted online by the deadline. **No Late Entries Accepted**

State Pin Design Contest

Every year Louisiana HOSA creates a state pin used as the State Leadership Conference pin & the official Louisiana trading pin during the International Leadership Conference.

Members are encouraged to create a pin design that **captures Louisiana**. Voting will take place at the Fall Forums and the winning pin design will be used as the inspiration for the official trading pin of Louisiana. The winning design for Louisiana HOSA will be selected by the student participants at the Fall Forum on October 19, October 21, and October 23. The criteria for the pin design are listed below:

Eligibility This competition is open to all active Louisiana HOSA members in good standing.

Deadline Members will submit pin designs by email to the State Advisor by **deadline of October 2, 2020.** shirlene.lahosa@gmail.com **No entries via Text or Fax.**

- Judging** Preliminary round judges will be individuals from the health care industry or other non-members. Preliminary judges will choose the top five designs.
- Voting** The top five designs will be presented at each Fall Forum where all members will vote on the design. The Winning Design will be announced on the LA HOSA Website the last week in October.

Materials and Specifications All entries to this competition must comply with the following materials and specifications:

- All entries must be in color; the design must use **no more than three colors**
- Entries may be hand-drawn, painted, colored with markers, crayons or colored pencils and should be on 8 ½" x 11" white unlined paper.
- Computer generated entries are allowed but must follow the size requirements.
- The design may be any shape.
- All entry drawings should be at least 5" wide x 5" tall.
- The actual pin when produced will be approximately 1" tall by the necessary width (no more than 1.5" x 1.5").
- **Small details may not show up on the actual pin and should be avoided.**
- Louisiana HOSA reserves the right to use more or less colors during production of the winning pin.
- The design should depict a Louisiana theme.
- This is NOT a team event. One entry per member. **There is a limit of 5 entries per chapter.** If more chapter members turn in a design, your chapter should vote on the top 5 and submit those.
- All copyright laws must be followed in the creation of the design.
- The words "Louisiana" and "HOSA" should appear on the pin. The words do not need to be next to each other. **Please** no date on pin.
- The National or state HOSA emblem or logo SHOULD NOT appear on the pin.
- All designs submitted become the property of Louisiana HOSA. Submitting a design for the state pin releases all rights for the winning design to Louisiana HOSA for marketing purposes.
- Students who are unable to attend the Fall Forum may still submit a design for consideration.
- The designer's name, school, and advisor's name must be lightly written in pencil on **the back** of the design in the bottom left corner.
- The winning school will receive a trophy at the SLC.
- Each participant at Fall forum will be allowed one vote.
- Submitted designs **must not** include blinkies, glitter, bobbleheads, or other advanced features. The management team may suggest adding features when the pin is sent to production & will work with the artist if needed.
- Designs must be submitted in a PDF format and be less than 10 MB in size. They must be submitted online by the deadline. **No Late Entries Accepted**

- The state officers and management team have the right to not submit any design that does not fulfill the mission of the HOSA student organization or represent Louisiana.

2020 – 2021 HOSA Theme: **“Unlock Your Potential”**

NATIONAL PROGRAMS AND OPPORTUNITIES

Public Health Leadership Scholars



The Public Health Leadership Scholars, hosted by the U.S. Department of Health and Human Services' (HHS) Office of the Assistant Secretary for Preparedness and Response, are available to HOSA-Future Health Professionals members, students, alumni, and advisors, who are interested in learning about public health while interacting with leading professionals within the Office of the Assistant Secretary for Preparedness and Response (ASPR), Office of the U.S. Surgeon General (OSG), and the United States Public Health Service Commissioned Corps (USPHS). For a short period of time, participants experience first-hand the mission of HHS,

ASPR, and the OSG, as well as responsibilities carried out by USPHS officers. The next round of seminars will occur in summer of 2020. Visit www.hosa.org for more information.

Louisiana HOSA has had one member selected to participate in the past.

Washington Leadership Academy (virtual this year)

The Washington Leadership Academy in Washington, D.C., has been hosted annually by HOSA for State Officers, and Local Chapter Leaders. It is a training experience for future HOSA leaders who are interested in learning more about running for local chapter office, becoming a more effective leader, understanding and valuing people, interacting with others, and serving the organization and others. This action-packed experience provides the highest level of HOSA leadership training available. We encourage local chapter leaders and members who want to strengthen their leadership skills and build their resume to join HOSA in Washington, D.C. There are also opportunities for local chapter advisors to interact and share valuable ideas with other HOSA advisors.

Louisiana is in the process of finding funding to allow all state officers and one chaperone to attend. Chapters may seek funding as well for chapter leaders to attend.

The Washington Leadership Academy will be hosted virtually on four separate dates this year. For more information, visit www.hosa.org. See calendar.

HOSA E-Magazine

The HOSA E-Magazine is the official publication of National HOSA for its members, advisors, partners, and supporters. The E-Magazine includes articles and information on chapter spotlights, alumni success stories, HOSA partners, healthcare related news, HOSA conferences, events and opportunities, and more! Many of the articles are written by individual members and every chapter is encouraged to write and submit an article. The E-Magazine is published three times a year and articles can be sent to hosa@hosa.org at any time for inclusion in the next issue. Visit www.hosa.org and select "E-Magazine" on the left menu bar to view the latest E-Magazine!

HOSA Service Project

Be The Match (BTM) is the HOSA Service project from 2020-2022. Thousands of people are diagnosed every year with life-threatening blood cancers and diseases like leukemia and sickle cell. They depend on Be The Match and their supporters to find a match to save their life.

As the global leader in blood stem cell transplantation, they connect the world's largest and most diverse registry of donors with patients who are their genetic match. 30% of patients needing a transplant have a match within their family. The other 70% of patients turn to Be The Match for help.

The state officer team will be encouraging members to raise funds for BTM at the Fall Forum. For more information on these events, please contact Louisiana HOSA State President, Macye Brown at macye.lahosa@gmail.com Some students may also be trained to register donors.

RUNNING FOR OFFICE

Become a Chapter, State, or National Leader of HOSA!

If your dream is to be a future health professional, community leader, or public servant then getting involved in the HOSA Officer Leadership Program is for you! Get started at the local level as a chapter officer or a committee member. Take the extra step to become a state officer or even national officer!



As an officer you'll receive premier training, plan incredible projects, meet with civic and industry leaders, lead service projects, design public relations and communications efforts, and plan leadership conferences. If you enjoy training and traveling, networking and new friends, or simply want to be recognized as a leader in the world's premier student organization for those pursuing careers in the healthcare industry, then get started today in the HOSA Officer Leadership Program.

The Louisiana HOSA State Officer Program provides tremendous opportunities for students to gain new leadership skills, learn critical thinking, improve their planning and organization skills, become stronger speakers, demonstrate initiative, and much more. In short, it is a unique and valuable experience that Louisiana HOSA is excited to make available to its members.

Interested in Applying for State Office?

It is never too early to start thinking about running for state office! The first thing every member interested in serving on the state level should do is first gain experience on the local level. Whether this is as a local officer or committee member, get involved!

The State Officer Application for 2021 – 2022 will be available on the state website this fall. The deadline to submit State Officer applications is February 5, 2021. All candidates must be active members of their local chapter and in good standing. Candidates must have a strong commitment to their education and have a 2.5 GPA or higher.

Louisiana HOSA's state officer election process is closely aligned with National HOSA. Candidates give a speech, are interviewed by the nominating committee, and complete a HOSA knowledge test. Local chapter voting delegates will vote to elect the state officer team.

Is State Office Right for Me?

The opportunities provided to state officers are tremendous. Many state officer alumni count this time as a pivotal experience in their life. Along with the opportunities and benefits of being an officer comes many important responsibilities. Those interested should carefully consider the decision to run for office and what it requires.

The average state officer spends five to ten hours a week working on their state officer assignments and responsibilities. Prior to state officer meetings, conferences, and HOSA events the amount of time required tends to spike as officers finalize preparations and polish up assignments. It is important to realize that although academics remain the number one priority, officers will not be able to fall behind in their responsibilities as a HOSA officer. Officers are required to participate in the team decision-making process, perform assigned tasks, and attend required conferences and events.

It is important to understand that if elected, officers will be required to attend conferences, officer meetings, and HOSA events throughout the year. Officers are not allowed to leave early, come late, or miss any parts of these events (except in the case of an extreme emergency) without permission. Officers have frequently had to miss out on big games, dances, trips, etc., because they conflicted with their state officer responsibilities. The expectation is that state officer responsibilities and commitments will take priority after an officer's academics.

Anyone willing to make this kind of commitment and that has the drive to succeed and the dedication to get the job done should seriously consider running for state office! If unsure, it is recommended members consult with their local advisor and get their opinion and advice. Those who decide to run for office can be assured that holding state office will be one of the most memorable experiences of their life, and one of the most effective career preparation experiences they could ever have while in high school.



National Officer Selection Process

Members wishing to take their HOSA involvement to the highest level can serve on the National Executive Council. National officers are the ambassadors of HOSA and represent the over 245,000 HOSA members. Any Louisiana HOSA member interested in running for national office must first be approved by the State Management Team. The National Officer Candidate applications are due to Louisiana HOSA by April 2, 2021. It is highly recommended that members serve as a State Officer prior to seeking approval to run for National Office.

SCHOLARSHIPS

HOSA's inter-curricular program fosters a culture of learning, discovery, and hard work. HOSA members look to prepare for their futures and many continue their education into the postsecondary/collegiate level. HOSA's scholarship program is designed to support members' pursuit of a higher education and reward outstanding members with scholarships.

Scholarships are provided by sponsors such as:

- Nursing Spectrum
- Kaiser Permanente Healthcare Issues Exam Scholarships
- National Technical Honor Society
- National Consortium on Health Science Education
- Delmar
- Philip R. Patton (HCA - Hospital Corporation of America)
- U.S. Public Health Service
- HOSA General Scholarship Fund
- And more!



HOSA has partnered with Tallo to provide our members with the opportunity to apply for scholarships. Scholarships are generously provided by HOSA partners. There is one scholarship application for any member interested in applying for a scholarship awarded on the national level. Applications and supplemental documentation must be **received by** National HOSA no later than **March 15, 2020**, for consideration.

The Awards Committee will make the final decision on scholarship awards and scholarship recipients will be announced in May. Those receiving scholarships on the national level will be recognized during the general sessions and an awards dinner at the International Leadership Conference.

Louisiana HOSA State Scholarships

Louisiana HOSA provides scholarships in addition to those offered by National HOSA. Any member of Louisiana HOSA in their senior year is eligible to apply for the \$500 Louisiana HOSA State Scholarship. The application materials for the Louisiana HOSA Scholarships will be available in January on Tallo. These LA HOSA scholarships will be awarded ONLY to Louisiana HOSA members.

ALUMNI

Any supporters of HOSA are encouraged to become Alumni members!

In addition to past HOSA members, all supporters of HOSA are also eligible to participate at the local, regional, and state levels as alumni members. Alumni members have an opportunity to help build and inspire the next generation of HOSA healthcare professionals.

Alumni members have the privileges of active members with the exception that they cannot vote, hold office, or compete. Benefits of alumni membership include:

- Strengthening your network through continued involvement
- Having the satisfaction of helping others
- Serving others
- Continuing professional development and leadership opportunities
- Being part of a great organization

Suggested participation includes:

- Assisting the advisor of your local chapter
- Volunteering to assist in activities at the regional, state, and national level
- Serving as a local chapter mentor
- Judging events
- Serving as a competitive event section leader
- Assisting with Courtesy Corps
- Presenting and assisting with workshops
- Connecting your health care agency to Louisiana HOSA
- Providing testimonials of how HOSA has impacted your life

How to become an alumni member:

- Complimentary alumni membership is available at both the state and national level. It's free!!!
- Go to <http://apps.hosa.org/hosaconf/alumni/register.jsp> and apply for Alumni Membership
- Complete the application and submit to National HOSA. That's all you have to do!
- Registration is one time only; you don't have to do it again!

CONFERENCE ATTIRE

Official Dress Code for ALL General Sessions

This dress code will be followed at the State Leadership Conference and International Leadership conference. Dress code for the Fall Forum will be announced in the Fall Forum Registration Packet.

This policy is for students. Advisors, family members, and guests are not required to wear the HOSA uniform or the black or navy-blue suit with a white shirt to the general sessions. The HOSA, Inc., Board of Directors approved the following dress policy that began at the 2011 NLC in Anaheim, California:

The official dress code for the student members for all general sessions will be either of the following:

- HOSA uniform (see below)
- OR
- Black or navy-blue suit with a white shirt (the white shirt can be the member's choice)
- Closed-toe blue or black shoes (hose optional)
- Male members **MUST** wear a tie.
- Female members may choose to wear knee-length skirt or slacks.

Student delegates not adhering to the above dress policy for all general sessions will **NOT** be admitted.

HOSA Uniform Policy

- Tailored navy blazer with emblem affixed over the heart.
- Shirt/blouse for females—white tailored or short-sleeve white jewel neck shell)
- Shirt for males—white closed-neck, man-tailored dress shirt, suitable for use with a tie
- Accent for female members - maroon HOSA scarf or tie is optional but not required
- Accent for male officers - navy or maroon long tie
- Matching navy slacks for males and matching navy slacks or skirts for females
- **Closed-toe** blue or black shoes (hose optional)



Competitive Event Dress Attire (may not apply for this year)

Delegates must adhere to the Dress Code as specified in the individual competitive event guidelines for the orientation and event in which they are competing. Bonus points will be given according to the individual guidelines. For all competitive events, five (5) bonus points will be added once per competitor and/or team to the tally sheet for appropriate dress. In team events, all team members must be properly dressed to receive the bonus points. Exceptions are noted in the event guidelines.

Other Conference Attire

Conference delegate attire should be proper and appropriate since it reflects directly upon the State Association and National HOSA. Conference delegates are strongly encouraged to wear HOSA uniforms or appropriate business attire to all conference activities (other than the general sessions where the official dress code for general sessions will must be adhered).

Under no circumstances will blue jeans, shorts, or other casual attire be accepted at any Conference function (with the exception of tours, HOSA's dances, and other recreational activities). Delegates dressed in such casual attire will not be permitted to participate in official HOSA conference meetings.

Tips for Dress Code Success

No dress code can cover all contingencies so HOSA members must use a certain amount of judgment in their choice of clothing to wear. HOSA members who experience uncertainty about acceptable HOSA attire should ask their HOSA local or state advisor.



Here are a few more tips to help you understand the HOSA Dress Code:

- No denim clothing or canvas shoes will be acceptable. Denim pants in colors other than blue are also not permitted. Blue jean skirts and dresses are NOT acceptable.
- Dressy pants of different lengths that are part of a suit/ensemble may be acceptable but “shorts” are not acceptable.
- Casual tank or tube tops, t-shirts, sweat pants/shirts, or tennis shoes are never acceptable.
- Business-casual attire may include khaki pants and polo tops.
- Clothing should be pressed and never wrinkled. Torn, dirty, or frayed clothing is unacceptable. Any clothing that has words, terms, or pictures that may be offensive to HOSA delegates or guests is unacceptable.
- Open-toed shoes and heeled sandals are permitted, except during general sessions.

HOSA BRAND

During the 2012 HOSA National Leadership Conference, the HOSA, Inc., Board of Directors launched a new brand for HOSA – Future Health Professionals. All chapters are highly encouraged to incorporate the new brand moving forward.

Meaning Behind the New Brand

Excerpts from the National HOSA Brand Style Guidelines

Main word in lower case: The main word is presented in lower case. On the surface, this creates a welcoming, organic look that conveys HOSA's connections to science and technology. But more than that, it is crucial in establishing HOSA as its own word, and not an acronym. When introducing HOSA's identity, Future Health Professionals, it is important to move away from "Health Occupations Students of America." In lowercase, it is much less likely that the H, O, S, and A will stand out as individual letters. When written, it should be HOSA or HOSA – Future Health Professionals.

HOSA's identity: The HOSA identity is positioned directly after HOSA so that it completes the natural eye line, making it hard to miss. "Future Health Professionals" is colorized with maroon to empower students and remind employers that HOSA members leave the program ready to join the workforce and/or pursue further education.

HOSA should **not** be referred to as
"Health Occupations Students of America"

HOSA is no longer an acronym.

HOSA is simply... **HOSA – Future Health
Professionals**



Presence of the HOSA emblem: Anchoring the logo is a simplified version of the HOSA emblem. The encircled triangle has long been the emblem of HOSA and is key in retaining familiarity and celebrating the organization's

long history. The points on the triangle represent today what they did in 1976: the three aspects of humankind's wellbeing; social, physical, and mental.

Note: New patches are now available. You can purchase these from Shirlene Bender for \$1.25.



Color palette and textures: The accompanying color palette and textures offer support to the logo by positioning HOSA as friendly and fresh. Colors were chosen on what would feel crisp and clean and fit naturally into the health environment. The circles and dots further support the curvy and organic feel of the logo. Typography is kept lowercase as well, to

support the friendly nature of the identity.

Stationery and marketing: The stationery and marketing elements feature these colors and shapes in a variety of ways to create a rich and vibrant system of collateral that stands out – reminding those who see it that HOSA is always moving forward.

Using the Brand

For more information about how to use the new brand, please refer to the National HOSA Brand Style Guidelines. Louisiana HOSA chapters may acquire access to HOSA logos, fonts, and other resources by contacting shirlene.lahosa@gmail.com.

NOTES
